



LEADCNC

Series: Laser-Equipped Cutting and Milling
Machining Center

Product Information

Model: UX 150



UX150 Laser-Equipped Cutting and Milling Machining Center specialization:

Designed for Milling, Drilling, Cutting, and Laser Machining operations on aluminum alloy profiles from the head to the end.

Automatic Loading and Feeding System:

Linear Direct Drive Motor Technology.

Multi-Functional Machining Modules:

Milling Module:

The 4-axis CNC milling module is equipped with four electric spindles, allowing simultaneous machining on multiple surfaces of the profile without requiring reorientation. This greatly enhances efficiency and precision.

Cutting Module:

The primary cutting module includes three 550mm diameter saw blades (Fixed angles: 45° Left/45° Right and 90°) whose movement is controlled by the three-axis CNC system. with three-axis CNC-controlled movement. The cutting module can operate synchronized with the milling module, enabling simultaneous cutting and machining for maximum productivity.

Laser Processing:

The UX150 features two high-precision laser units, designed for marking and assisting in milling operations, substantially increasing processing speed.



Product Information

Model: UX 150

Automatic Unloading System:

The UX150 includes an automatic unloading mechanism that transfers finished profile segments from the cutting module to the unloading magazine. The transverse belt magazine supports profiles up to 4000 mm in length (customized for longer profiles).

Fully Enclosed Central Cabinet:

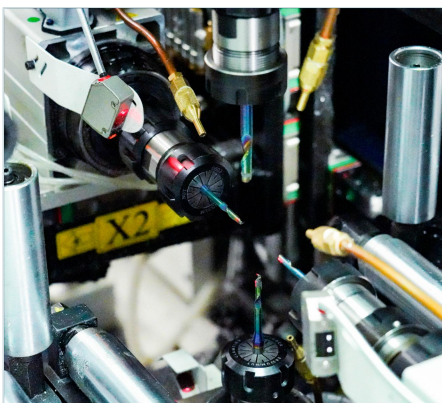
All modules are enclosed within the central cabinet, ensuring high standards of soundproofing and comprehensive operator safety.

Automatic Labeling:

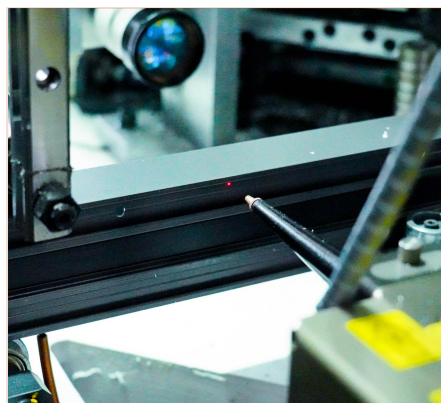
Equipped with a servo motor-driven automatic labeling system, the E200 minimizes manual intervention and maximizes operational efficiency.

Smart Integration and High Efficiency:

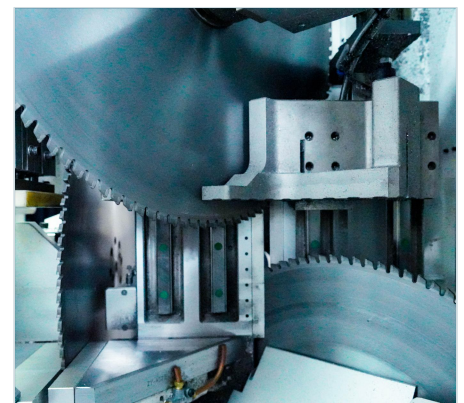
The E200 enables the simultaneous operation of its four spindles and cutting processes, drastically reducing machining time. The integration of laser and mechanical machining modules achieve levels of speed and precision unattainable by traditional equipment.



Four Electric Spindles



Laser Unit



Cutting Unit

**Product Information****Model: UX 150**

Machining Specifications	Parameter Value
Max. Profile Cross-Section	W*H = 150 × 150 mm
Min. Profile Cross-Section (depending on gripper position)	W*H = 30 × 20 mm
Raw profile length	L=600 – 7,000 mm
Finished part length	L=300 – 7,000mm
Feed Magazine	Parameter Value
Number of swing arms	4
Mounting positions	7
Infeed	Parameter Value
Drive	Linear motor
Motorized gripper adjustment	Y/Z
Gripper rotation	Standard
Residual piece measurement	Optional
Residual piece processing	Fully automatic
Machining Station	Parameter Value
Axes	4
Router spindles	4 (servo-assisted)
Laser	2 (Milling and engraving)

LEAD CNC Machinery Co., Ltdwww.leadcnc.com

The right to make technical alterations is reserved.

**Product Information****Model: UX 150**

Saw	Parameter Value
Axes	3
Saw blades (diameter)	3*550mm
Sawing angles	+45° , -45° , 90°
Outfeed clamping carriages	Parameter Value
Axis	1
Laser Marking Machine	Optional

Outfeed conveyor	Parameter Value
Lifting station	YES
Outfeed conveyor width	4,000 mm (can be extended)
General Parameters	Parameter Value
Power supply	380V/50Hz
Gross power	25kw
Gas pressure	0.5~0.8Mpa
Gas consumption	300L/min
Net weight	8,900kg
Overall dimensions (L x W x H)	19,500×4,900×2,300mm (including workbenches on both sides)

LEAD CNC Machinery Co., Ltdwww.leadcnc.com

The right to make technical alterations is reserved.



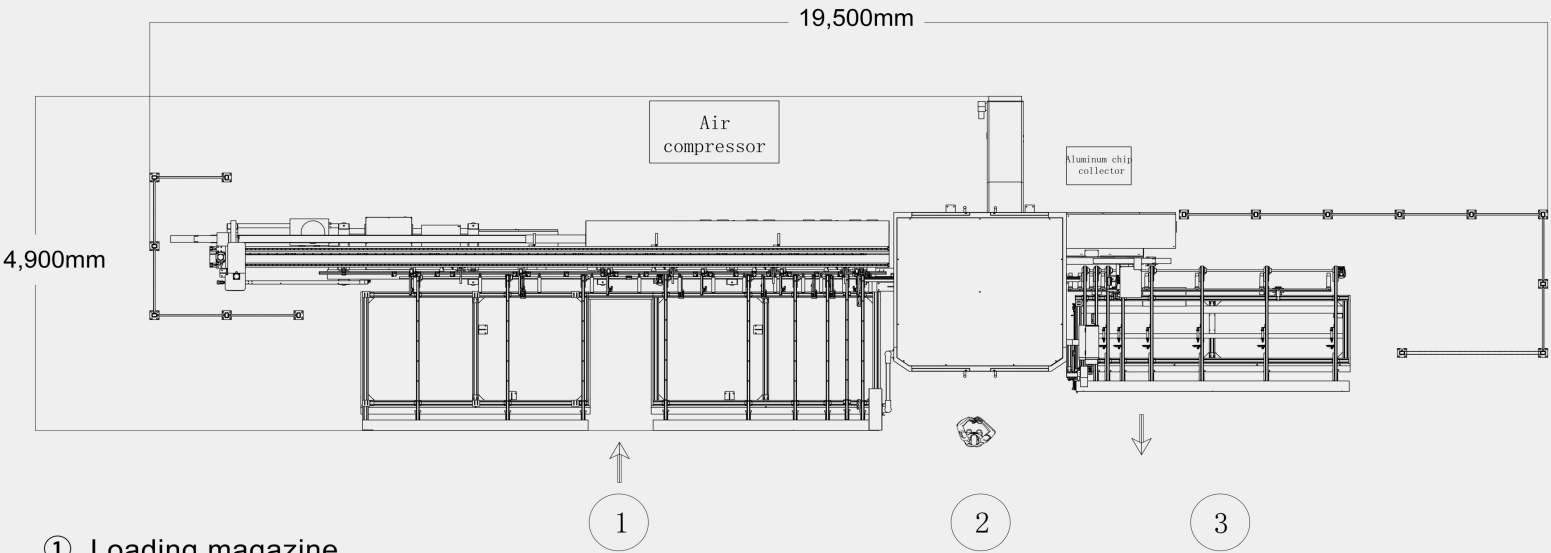
LEADCNC

Series: Laser-Equipped Cutting and Milling
Machining Center

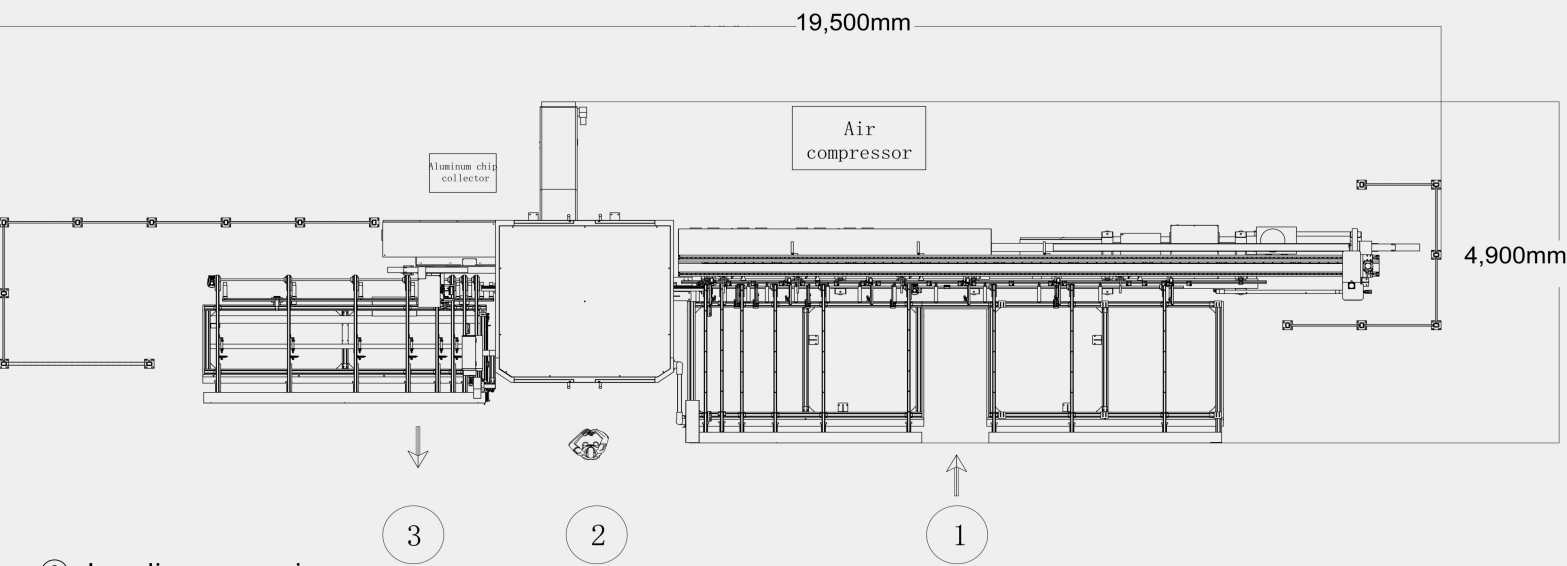
Product Information

Model: UX 150

LAYOUT



- ① Loading magazine
- ② Machining center
- ③ Outfeeding section



- ① Loading magazine
- ② Machining center
- ③ Outfeeding section

LEAD CNC Machinery Co., Ltd

www.leadcnc.com

The right to make technical alterations is reserved.



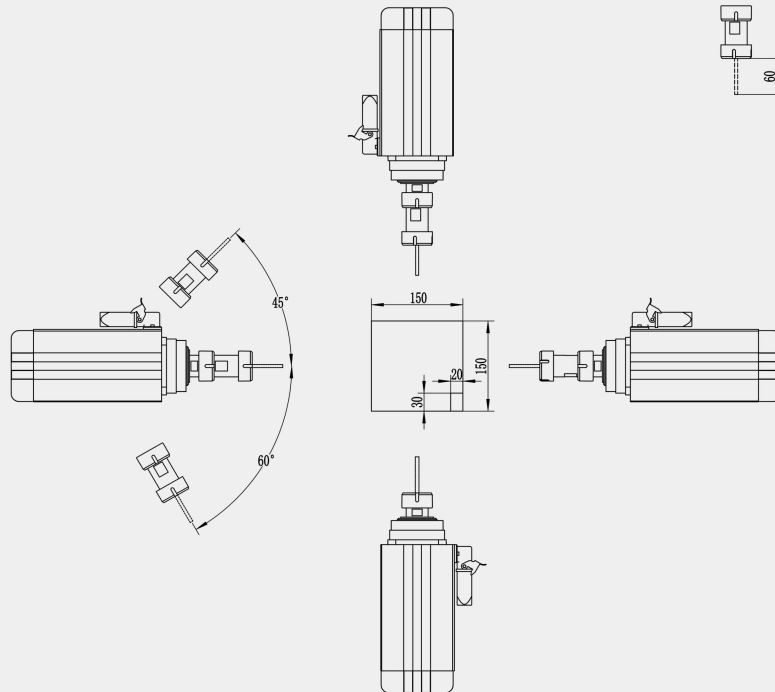
LEADCNC

Series: Laser-Equipped Cutting and Milling
Machining Center

Product Information

Model: UX 150

MACHINING AREA OF THE MILLING MODULE



LEAD CNC Machinery Co., Ltd

www.leadcnc.com

The right to make technical alterations is reserved.



LEADCNC

Serial No: 1

Name: Intelligent Sorting and Allocating Line

Model: Topaz

Product Information

LEADCNC



- Works in conjunction with the main equipment to achieve material transfer between processing machines, reducing handling time and labor intensity, and improving production efficiency.
- Equipped with a variable frequency motor for the conveyor, the speed is adjustable and can be adjusted according to the production process cycle.
- The system releases a section of profile material every 15 seconds according to the profile type matched with the sawing center (specific release time is determined by the processing requirements of the material).
- Single section length: 5000mm (specific length based on the settings of the processing equipment).
- Maximum profile sorting length: 5000mm; maximum width: 200mm (customizable).
- Equipped with a roller conveyor line and a sliding conveyor belt, the sliding conveyor belt can be raised or lowered as needed.
- A QR code scanner is provided for sorting and flow direction control based on process requirements.



LEADCNC

Serial No: 1

Name: Intelligent End Milling Machine

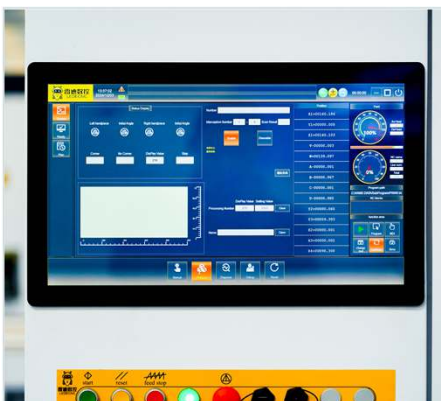
Model: Diamond 350UP

Product Information



This is a newly developed high-efficiency automated milling machine designed for aluminum windows, doors and curtain wall machining. Based on extensive market research, the machine is engineered to achieve a high level of automation, precision, and production efficiency while minimizing labor costs and ensuring ease of maintenance. Equipped with feeding, pushing, and unloading devices, the machine can perform automatic feeding, milling, and unloading cycles seamlessly. It supports seamless integration with various software systems, significantly boosting production efficiency, reducing labor intensity, and enhancing product quality.

The machine primarily consists of two movable milling heads, a frame, an electrical cabinet, and a CNC system. Its saw blade enables machining at angles ranging from 0° to 120°.



**INTELLIGENT OPERATING
SYSTEM**



**THE FOUR MITRE SAW
MAKE END MILLING
SYNCHRONOUSLY**



**POSITIONING SYSTEM
WITH UNPARALLELED
PRECISION**



LEADCNC

Serial No: 1

Name: Intelligent End Milling Machine

Model: Diamond 350UP

Product Specification

Machining Parameters	Parameter Value
Max.processing length	360-3,200mm
Processing profile width	25-180mm
Processing profile height	25-170mm
Machining Precision	Parameter Value
Processing Precision	± 0.1 mm
Repeatable positioning accuracy	± 0.02 mm
Cutting surface roughness	Ra12.5um
Technical Parameters	Parameter Value
Cutting tool diameter max	300mm
Saw blade	φ300×5.5×φ30 φ300×3.2×φ30mm
Feed speed	0 ~ 3m/min
General Parameters	Parameter Value
Power supply	380V/50Hz
Rated Power /Power	32KW
Pressure	0.5-0.8MPa
Air consumption	200L with spraying
Weight	4,985KG
Overall dimensions	6,960mm×1,840mm×1,995mm

LEADCNC Machinery Co., Ltd

www.leadcnc.com

The right to make technical alterations is reserved.



LEADCNC

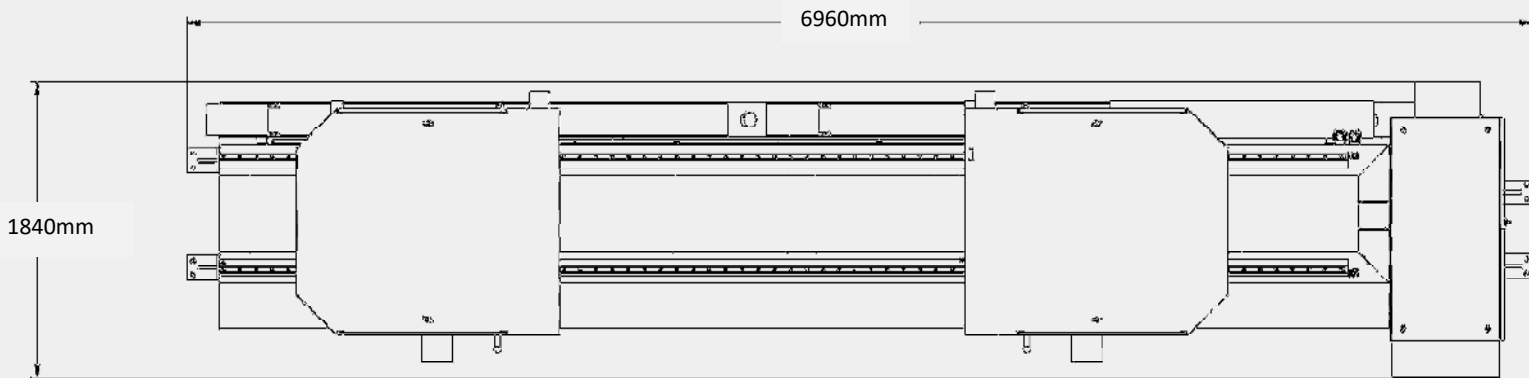
Serial No: 1

Name: Intelligent End Milling Machine

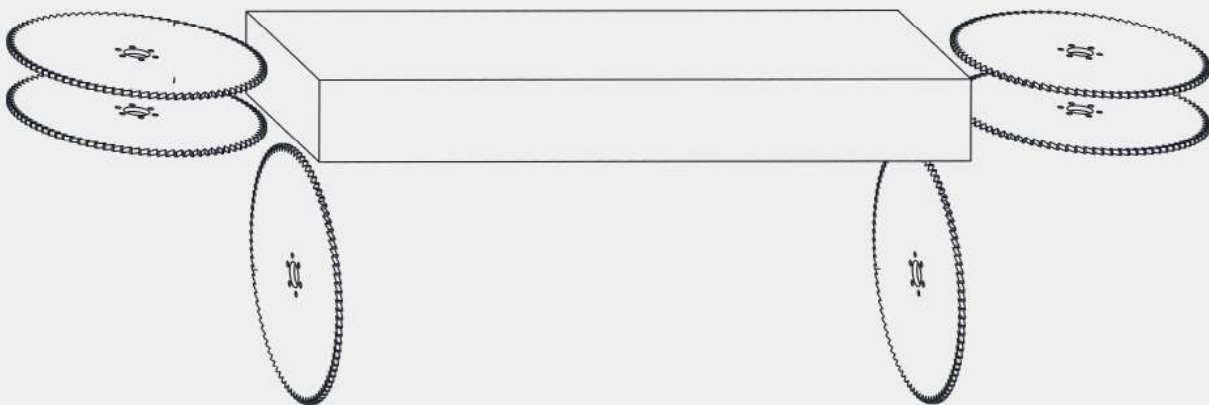
Model: Diamond 350UP

Product Specification

LAYOUT



MACHINING AREA OF THE MILLING UNIT



Processing profile length (mm)	360-3200
Processing profile height (mm)	25-170
Processing profile width (mm)	25-180

LEADCNC Machinery Co., Ltd

www.leadcnc.com

The right to make technical alterations is reserved.



LEADCNC

Serial No: 1

Name: Intelligent Buffer Station

Model: LD-QTK

Product Information



- Designed to stock complete sets of machined profiles for windows and doors.
- Equipped with a stable, multi-tier racking system for horizontal storage of finished aluminum profiles.
- Profile loading and allocation are performed via an escalator, ensuring precise positioning using servo motors.
- Storage space accommodates up to 8 profiles with a depth of 960 mm.
- The buffer station features 25 layers, offering storage for up to 50 window frame stiles or sashes (customizable).
- Finished profile storage is organized by production lots, ensuring compatibility with complete window assemblies.
- Supports remote online maintenance and commissioning services.



LEADCNC

Product Specification

Serial No: 1

Name: Intelligent Buffer Station

Model: LD-QTK

Machining Specifications	Parameter Value
Max. Profile Cross-Section	H= 150mm, L=300-6,000mm
Maximum Storage Width	Accommodates 8 pieces when the width is 80mm and the depth is 900mm.
Axis	4
Number of Storage Layers	Dual storage with 25 layers; accommodates 50 slots for profiles \leq 3,000mm.

General Parameters	Parameter Value
Power supply	380V/50Hz
Power	10KW
Pressure	0.5-0.8Mpa
Gas consumption	50L/min
Weight	10,300KG
Overall dimensions	13,500×3,350×6,420mm (including workbenches on both sides)

LEADCNC Machinery Co., Ltd

www.leadcnc.com

The right to make technical alterations is reserved.



LEADCNC

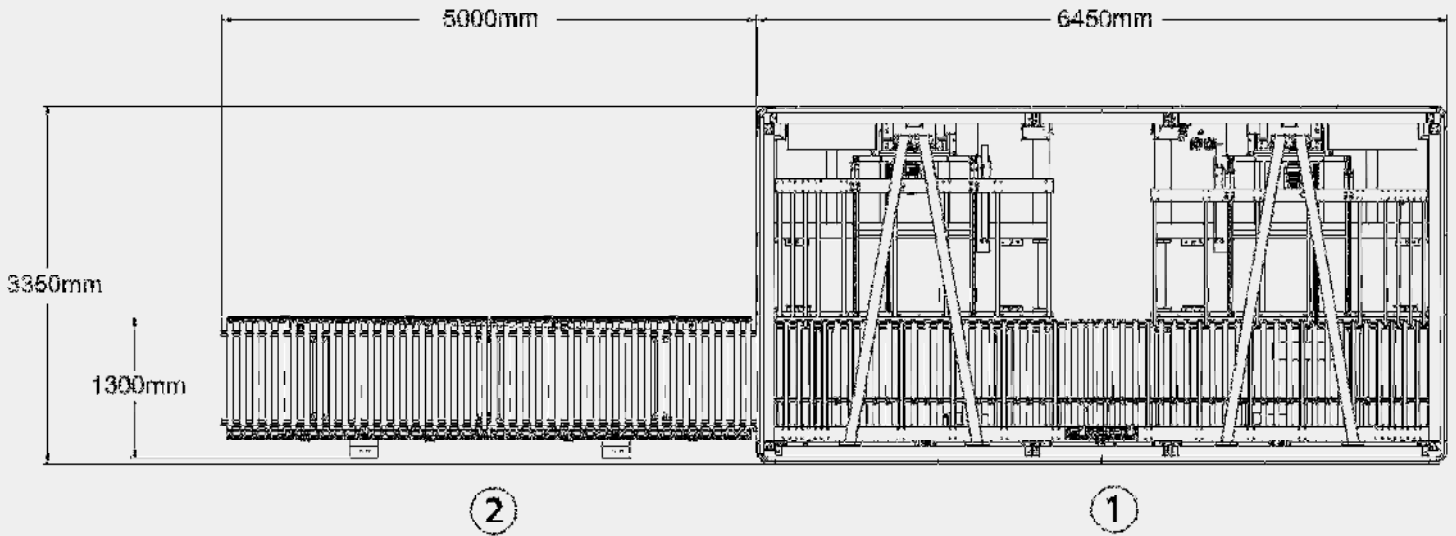
Serial No: 1

Name: Intelligent Buffer Station

Model: LD-QTK

Product Specification

LAYOUT



- ① Semi-finished Profile Storage Area
- ② Semi-finished Profile Dispatch Area

LEADCNC Machinery Co., Ltd

www.leadcnc.com

The right to make technical alterations is reserved.