



LEADCNC

Series: Laser-Equipped Cutting and Milling  
Machining Center

Product Information

Model: UX 150



**UX150 Laser-Equipped Cutting and Milling Machining Center specialization:**

Designed for Milling, Drilling, Cutting, and Laser Machining operations on aluminum alloy profiles from the head to the end.

**Automatic Loading and Feeding System:**

Linear Direct Drive Motor Technology.

**Multi-Functional Machining Modules:**

**Milling Module:**

The 4-axis CNC milling module is equipped with four electric spindles, allowing simultaneous machining on multiple surfaces of the profile without requiring reorientation. This greatly enhances efficiency and precision.

**Cutting Module:**

The primary cutting module includes three 550mm diameter saw blades (Fixed angles: 45° Left/45° Right and 90°) whose movement is controlled by the three-axis CNC system. with three-axis CNC-controlled movement. The cutting module can operate synchronized with the milling module, enabling simultaneous cutting and machining for maximum productivity.

**Laser Processing:**

The UX150 features two high-precision laser units, designed for marking and assisting in milling operations, substantially increasing processing speed.



#### **Automatic Unloading System:**

The UX150 includes an automatic unloading mechanism that transfers finished profile segments from the cutting module to the unloading magazine. The transverse belt magazine supports profiles up to 4000 mm in length (customized for longer profiles).

#### **Fully Enclosed Central Cabinet:**

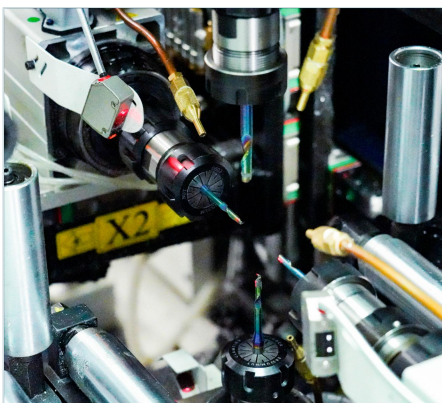
All modules are enclosed within the central cabinet, ensuring high standards of soundproofing and comprehensive operator safety.

#### **Automatic Labeling:**

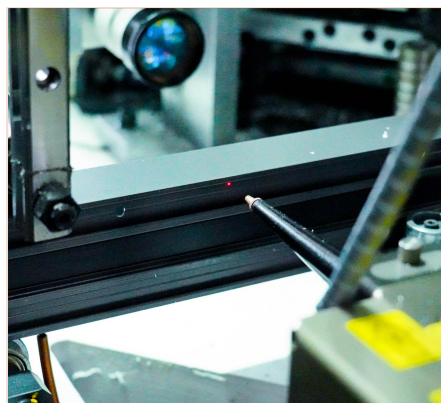
Equipped with a servo motor-driven automatic labeling system, the E200 minimizes manual intervention and maximizes operational efficiency.

#### **Smart Integration and High Efficiency:**

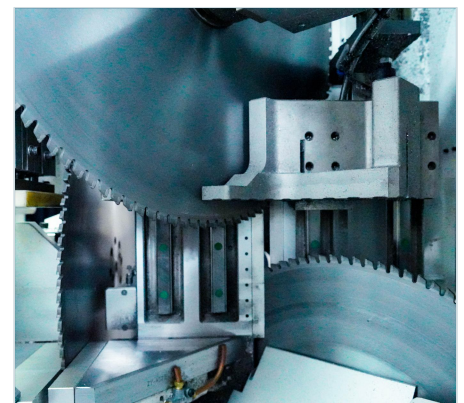
The E200 enables the simultaneous operation of its four spindles and cutting processes, drastically reducing machining time. The integration of laser and mechanical machining modules achieve levels of speed and precision unattainable by traditional equipment.



**Four Electric Spindles**



**Laser Unit**



**Cutting Unit**

**Product Information****Model: UX 150**

<b>Machining Specifications</b>	<b>Parameter Value</b>
Max. Profile Cross-Section	W*H = 150 × 150 mm
Min. Profile Cross-Section (depending on gripper position)	W*H = 30 × 20 mm
Raw profile length	L=600 – 7,000 mm
Finished part length	L=300 – 7,000mm
<b>Feed Magazine</b>	<b>Parameter Value</b>
Number of swing arms	4
Mounting positions	7
<b>Infeed</b>	<b>Parameter Value</b>
Drive	Linear motor
Motorized gripper adjustment	Y/Z
Gripper rotation	Standard
Residual piece measurement	Optional
Residual piece processing	Fully automatic
<b>Machining Station</b>	<b>Parameter Value</b>
Axes	4
Router spindles	4 (servo-assisted)
Laser	2 (Milling and engraving)

**LEAD CNC Machinery Co., Ltd**[www.leadcnc.com](http://www.leadcnc.com)

The right to make technical alterations is reserved.

**Product Information****Model: UX 150**

<b>Saw</b>	<b>Parameter Value</b>
Axes	3
Saw blades (diameter)	3*550mm
Sawing angles	+45° , -45° , 90°
<b>Outfeed clamping carriages</b>	<b>Parameter Value</b>
Axis	1
Laser Marking Machine	Optional

<b>Outfeed conveyor</b>	<b>Parameter Value</b>
Lifting station	YES
Outfeed conveyor width	4,000 mm (can be extended)
<b>General Parameters</b>	<b>Parameter Value</b>
Power supply	380V/50Hz
Gross power	25kw
Gas pressure	0.5~0.8Mpa
Gas consumption	300L/min
Net weight	8,900kg
Overall dimensions (L x W x H)	19,500×4,900×2,300mm (including workbenches on both sides)

**LEAD CNC Machinery Co., Ltd**[www.leadcnc.com](http://www.leadcnc.com)

The right to make technical alterations is reserved.



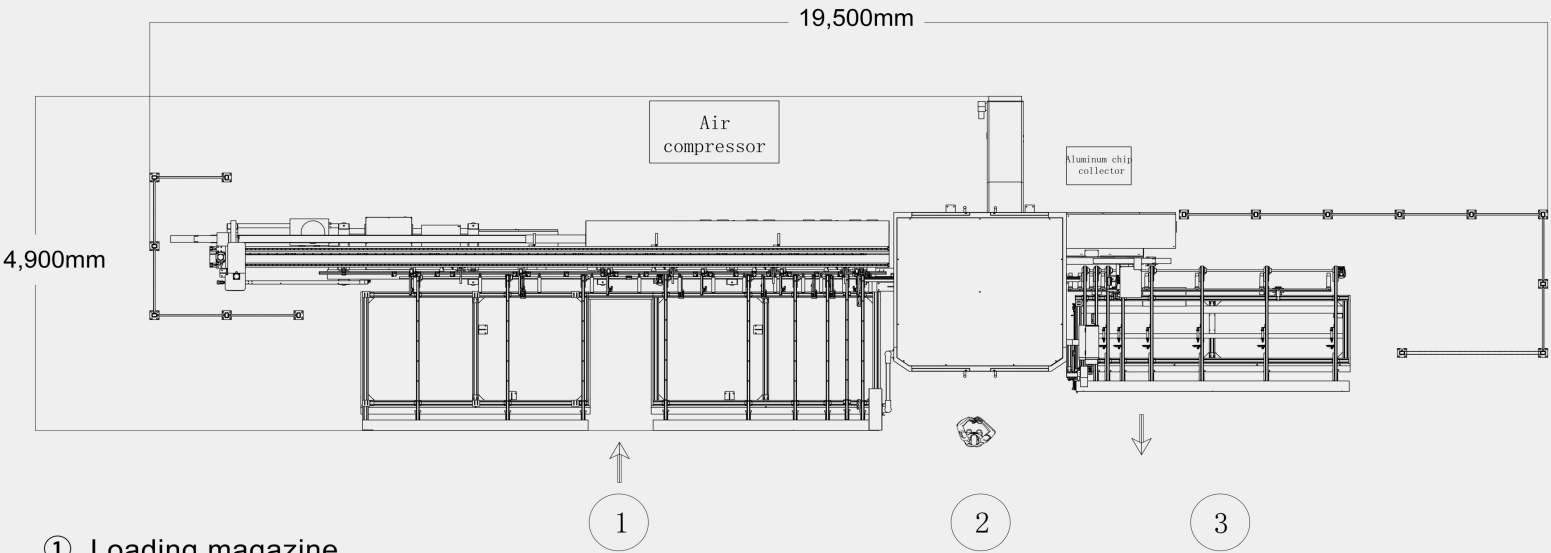
LEADCNC

Series: Laser-Equipped Cutting and Milling  
Machining Center

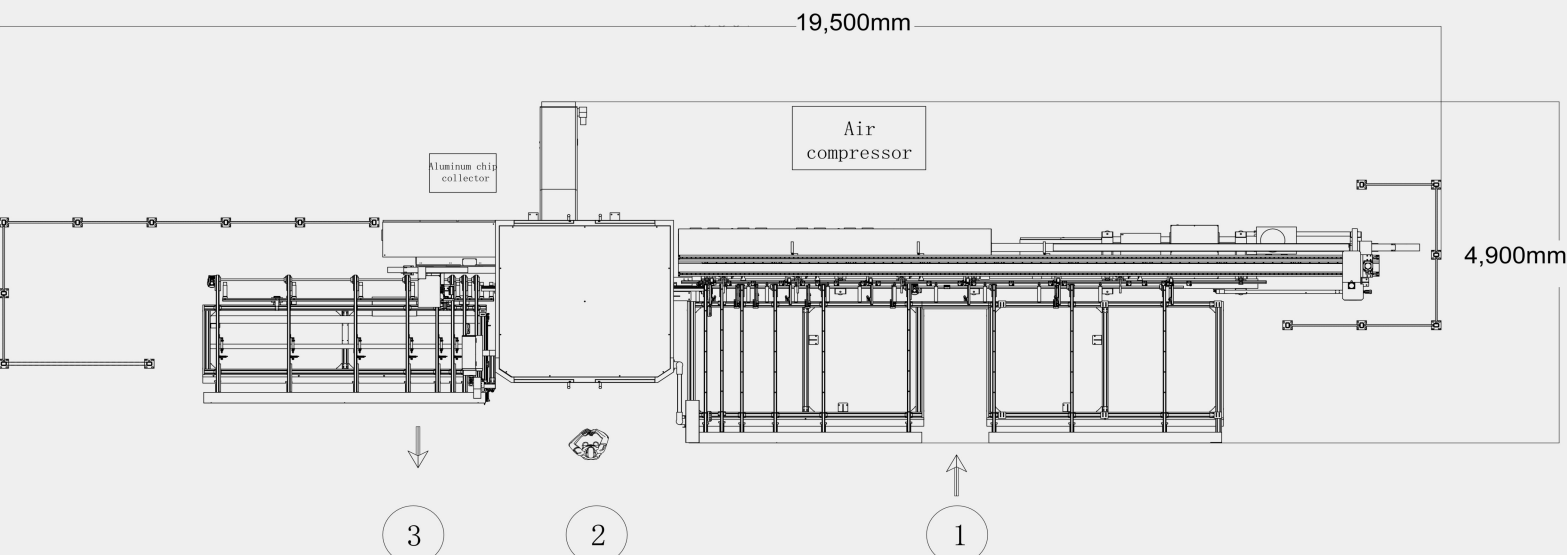
Product Information

Model: UX 150

LAYOUT



- ① Loading magazine
- ② Machining center
- ③ Outfeeding section



- ① Loading magazine
- ② Machining center
- ③ Outfeeding section

**LEAD CNC Machinery Co., Ltd**

[www.leadcnc.com](http://www.leadcnc.com)

The right to make technical alterations is reserved.



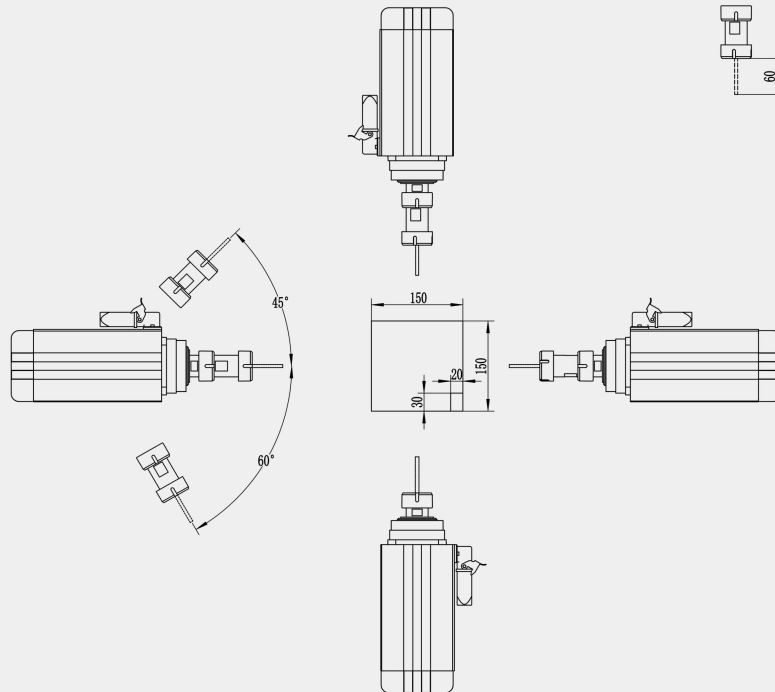
LEADCNC

Series: Laser-Equipped Cutting and Milling  
Machining Center

Product Information

Model: UX 150

MACHINING AREA OF THE MILLING MODULE



**LEAD CNC Machinery Co., Ltd**

[www.leadcnc.com](http://www.leadcnc.com)

The right to make technical alterations is reserved.